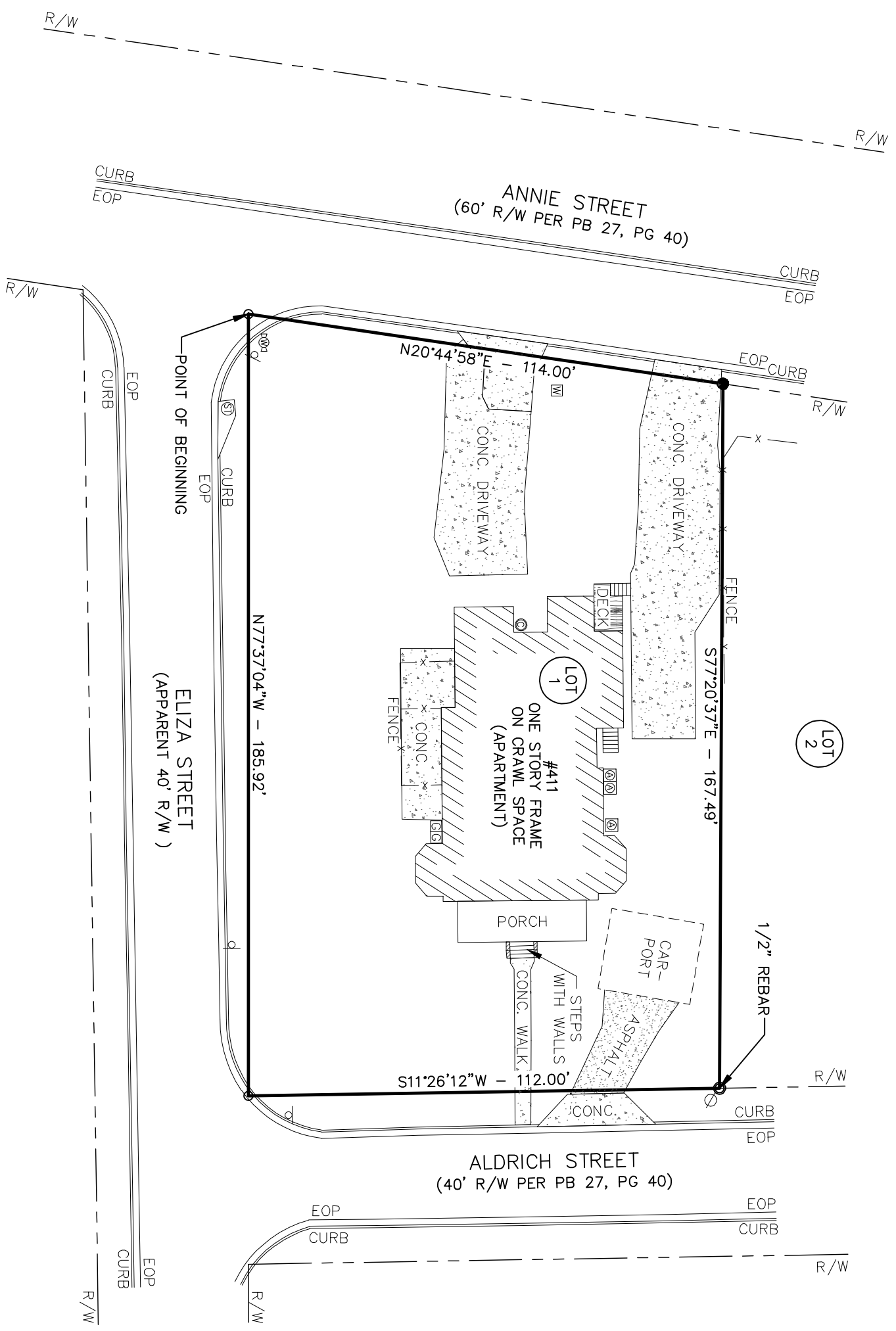


LEGEND:

- PROPERTY CORNER
- FOUND (AS NOTED)
- 1/2" REBAR WITH CAP SET LSF# 839
- R/W MONUMENT
- FIRE HYDRANT
- WATER METER
- WATER VALVE
- POWER POLE
- LIGHT POLE
- POWER/LIGHT POLE
- GUY WIRE
- POWER METER
- POWER BOX
- A/C UNIT
- MANHOLE
- CLEAN OUT
- CATCH BASIN
- JUNCTION BOX
- OUTFLOW STRUCTURE
- DRAINAGE INLET
- GAS METER
- GAS VALVE
- CABLE BOX
- TELEPHONE BOX
- SIGNAL CONTROL BOX
- SIGN
- W— WATER LINE
- U— OVERHEAD UTILITY LINE
- S— SEWER LINE
- G— GAS LINE
- C— CABLE LINE
- T— TELEPHONE LINE
- X— FENCE LINE
- 920— CONTOUR LINE
- BSL BUILDING SETBACK LINE
- CONC. CONCRETE
- EOP EDGE OF PAVEMENT
- L.L. LAND LOT
- N/F NOW OR FORMERLY
- P/L PROPERTY LINE
- R/W RIGHT-OF-WAY
- D.E. DRAINAGE EASEMENT
- O.H. OVERHANG
- CNT CANTILEVER
- DB DEED BOOK
- PB PLAT BOOK
- PG PAGE



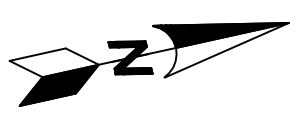
TOTAL AREA: 0.456 ACRES / 19,862 SQUARE FEET.

BOUNDARY REFERENCE: DEED BOOK 20486, PAGE 317 & PLAT BOOK 27, PAGE 40. FIELDWORK PERFORMED ON 10/04/12.

THIS MAP OR PLAT HAS BEEN CALCULATED FOR CLOSURE AND IS FOUND TO BE ACCURATE WITHIN ONE FOOT IN +10,000 FEET.

THIS PLAT HAS BEEN PREPARED USING A TRIMBLE 5603 ROBOTIC TOTAL STATION.

THE FIELD DATA UPON WHICH THIS MAP OR PLAT IS BASED HAS A CLOSURE PRECISION OF ONE FOOT IN 10,000+ FEET, AND ANGULAR ERROR OF 10 SECONDS PER ANGLE POINT, AND WAS ADJUSTED USING COMPASS RULE.



MAGNETIC NORTH
SCALE: 1"=30'

