

Architecture
Portfolio

Gustavo Masis

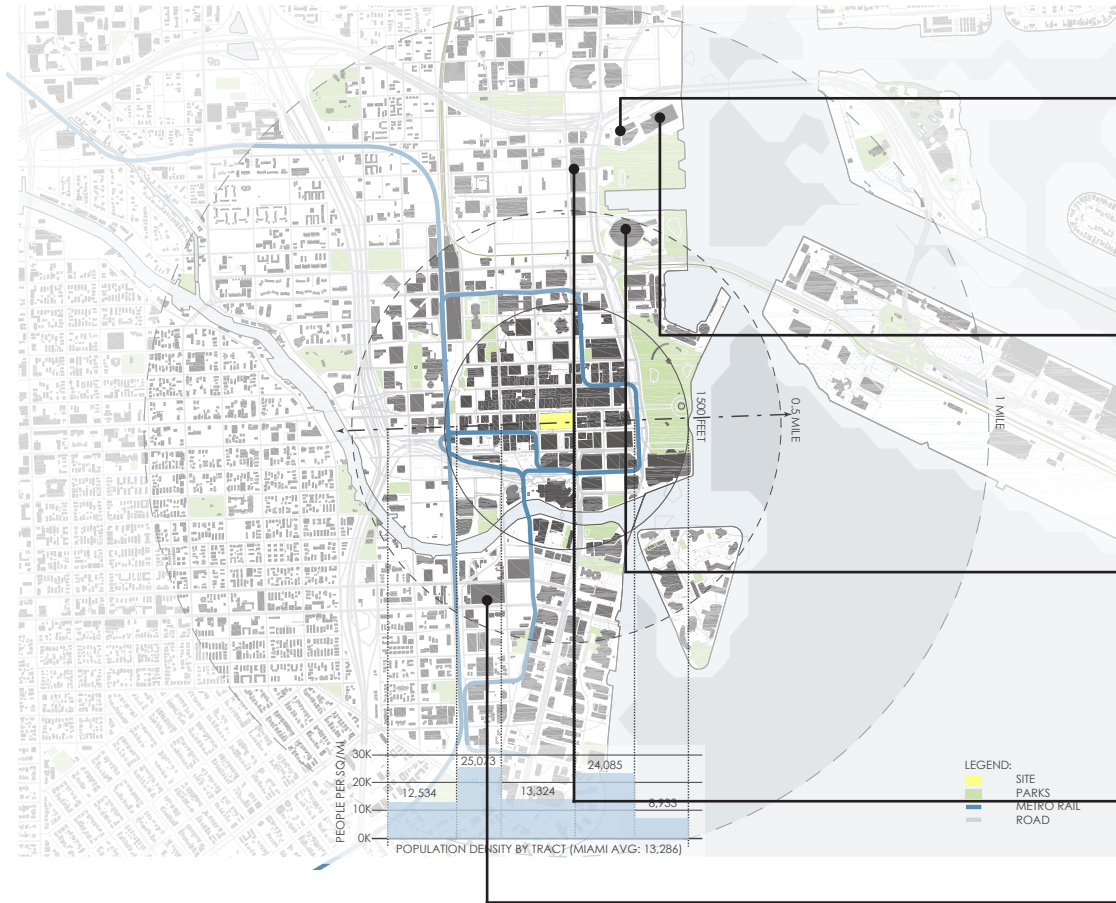
FIU CARTA

FIU CARTA uses central spaces to arrange its programs. The building is design around cores that house all of the public spaces and/or the service spaces. The service and educational spaces are all push to edge of the project in order to create a continuous open public space all within a central core. This central public core is the most apparent and contains the grand stairs and the internal green space. The green space is the most celebrated space in the project. It is accessible from all the spaces in the building and ends as an atrium which spans the entire height of the building. the studios, which academic public spaces is houses in an open space that culminates in a glass facade that cantalievers into the plaza. The plaza makes a reference to Seagram building by Mies van der Rohe by pushing its program back and creating an public plaza that is also aligned to the buildings public core.

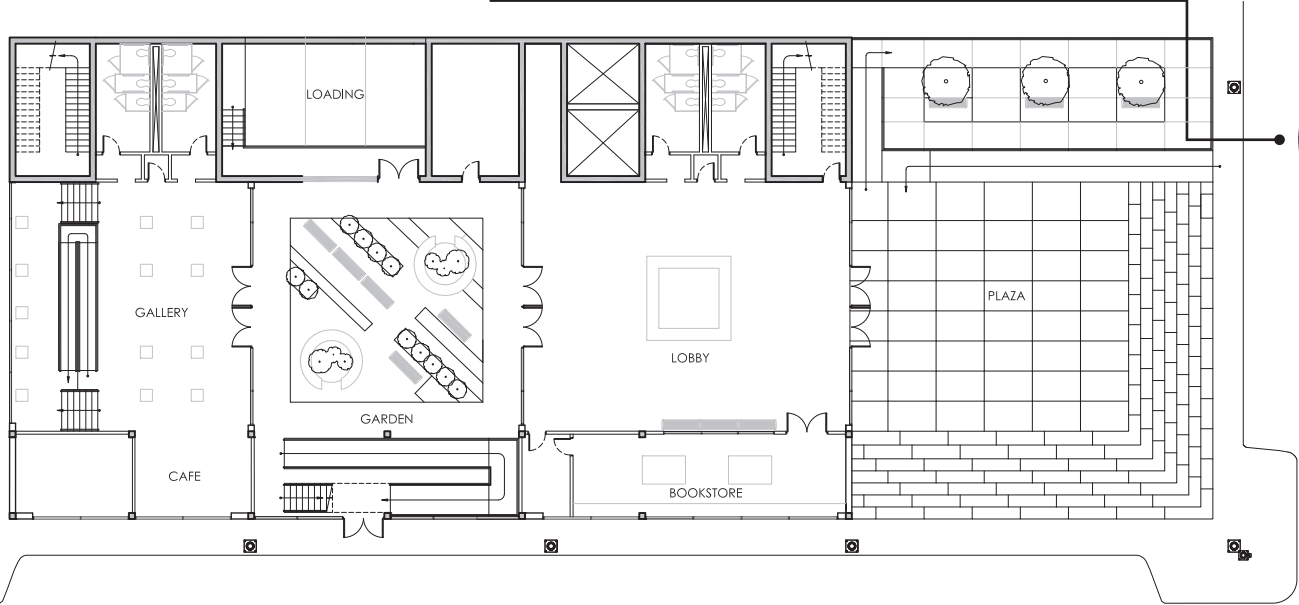
PERSPECTIVE



SITE MAP



1ST FLOOR PLAN
 SCALE: 1'-0"= 1/32"

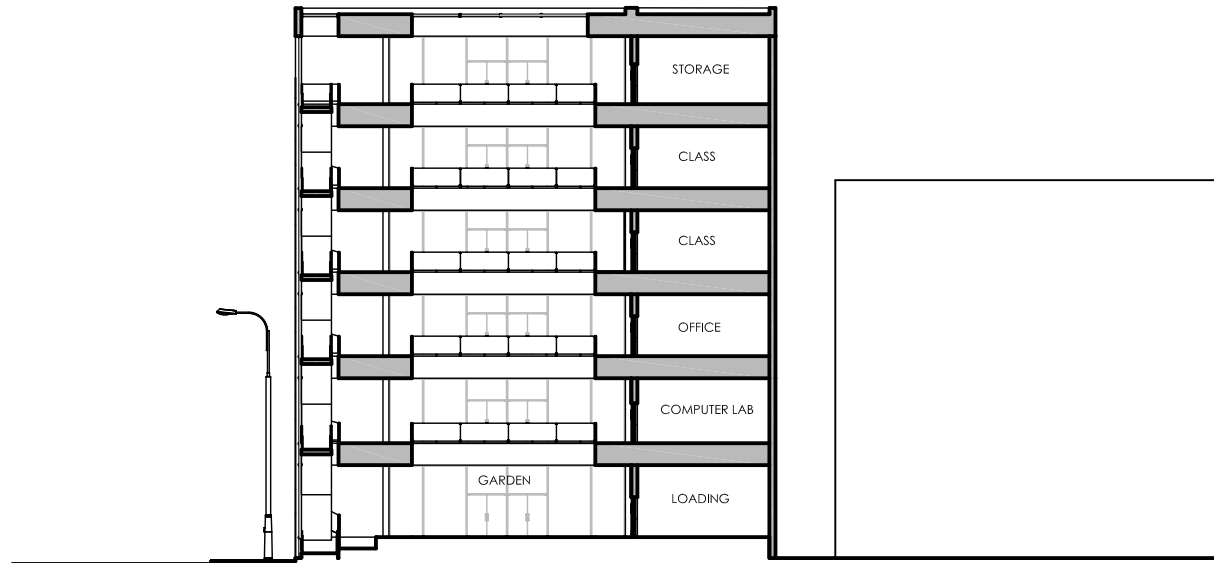




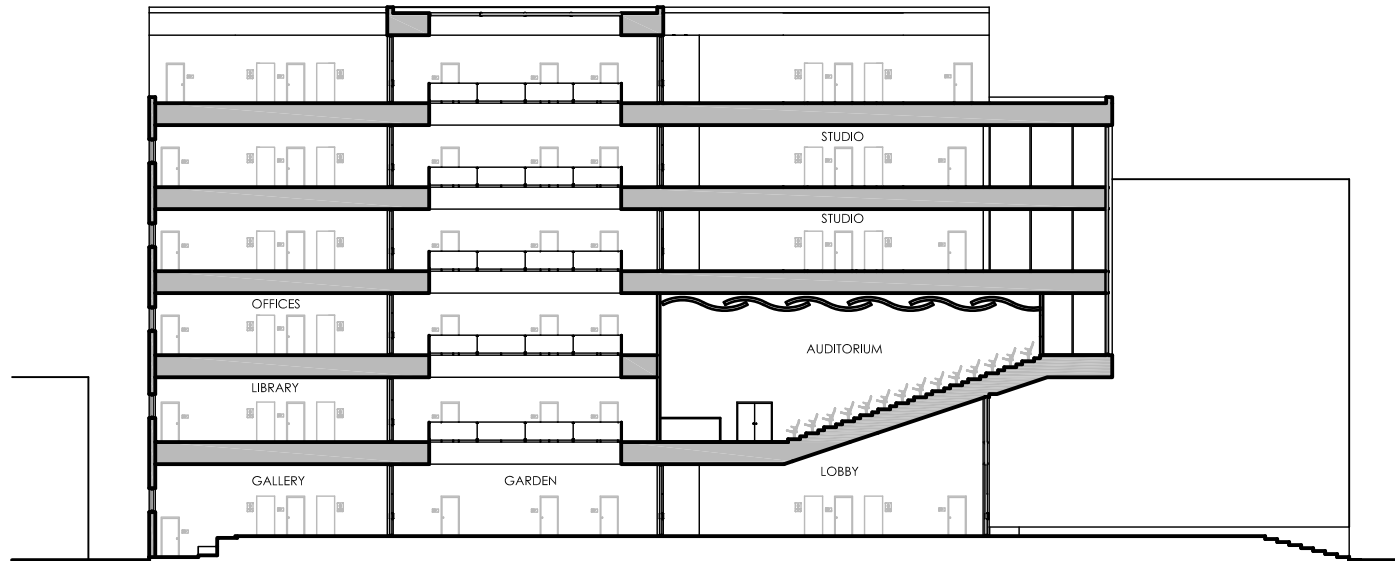
FRONT ELEVATION
SCALE: 1'-0" = 1/32"



LONGITUDINAL ELEVATION
SCALE: 1'-0" = 1/32"

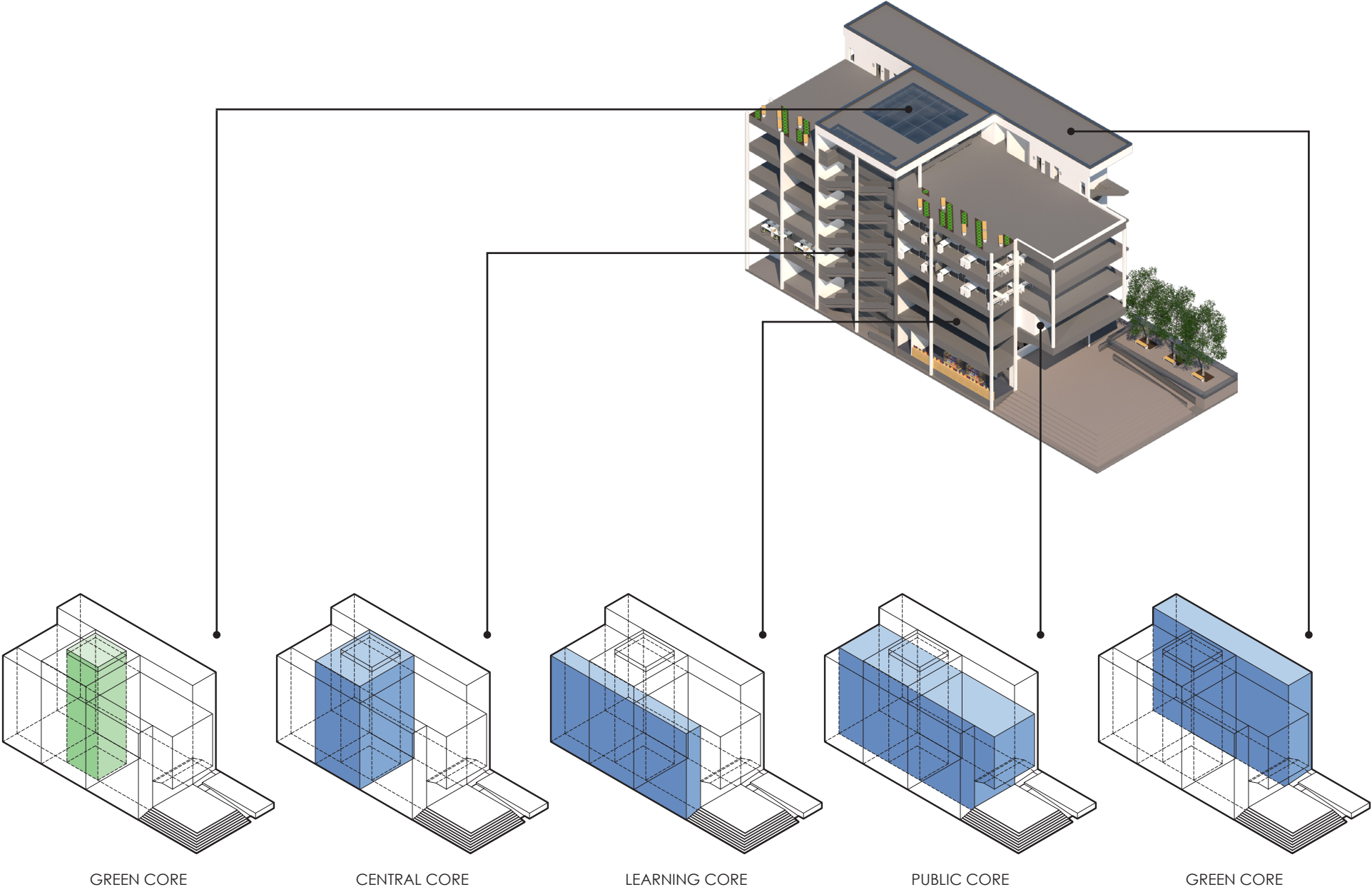


CROSS SECTION
SCALE: 1'-0" = 1/32"



LONGITUDINAL ELEVATION
SCALE: 1'-0" = 1/32"

STRUCTURAL DIAGRAM



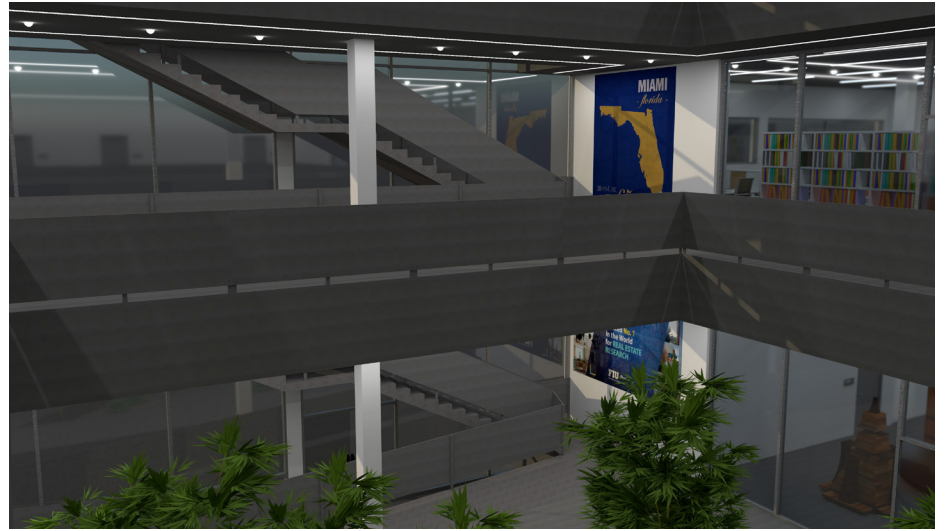
GREEN CORE

CENTRAL CORE

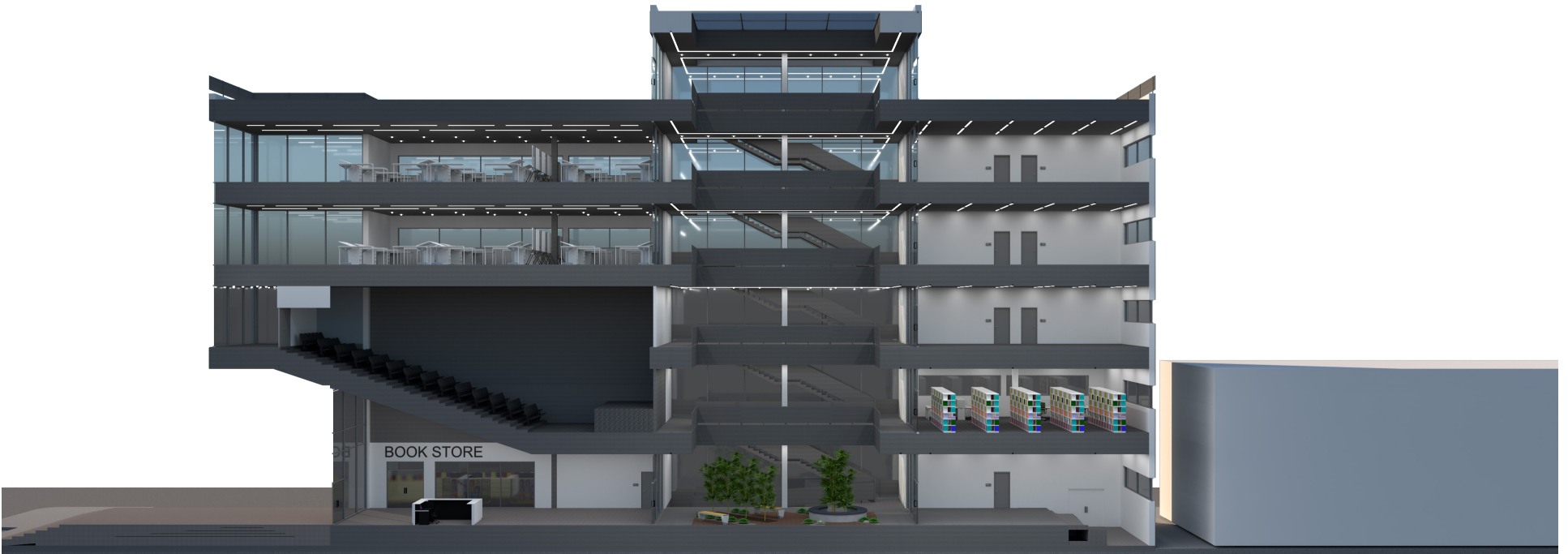
LEARNING CORE

PUBLIC CORE

GREEN CORE



RENDERINGS



PERSPECTIVE SECTION